



# PIUSI

**USA INC** ®

## Fluid Handling Innovations

DEF SOLUTIONS CATALOG





Over 90,000 DEF pumps installed worldwide are a reminder that PIUSI has spent the last six decades perfecting their craft in fluid handling and dispensing.

Since 1953 PIUSI SpA has been the leader of the lubricant and fuel transfer market, also specializing in pumps, meters, compressors and measurement devices. Thanks to the innovative solutions, long-life high performance and cost effective products PIUSI has been a part of commercial, industrial and governmental facilities reducing the NOx emissions which has been mandated since 2004.

PIUSI SpA is currently making its presence known in the DEF solutions market of the continental United States with their division, PIUSI USA, Inc. Bringing their high quality dispensers, pumps and meters to a new market directly from Italy.

PIUSI's DEF products are consumer tested and price conscious with your best interest in mind.

Con más de 90.000 bombas instaladas mundial demuestra que PIUSI ha pasado los últimos seis décadas perfeccionando su arte en el manejo y la administración de líquidos.

Desde 1953 PIUSI SpA ha sido el líder en la industria de lubricantes y el mercado de transferencia de combustibles; especializados en bombas, medidores, compresores y dispositivos de medida. Gracias a las soluciones innovadoras, productos de alta durabilidad, alto rendimiento y precios económicos, PIUSI ha sido parte de facilidades comerciales, industriales y gubernamentales, reduciendo la emisión de NOx que ha sido encargado desde 2004.

Actualmente PIUSI SpA sigue expandiendo su presencia en el mercado de soluciones para DEF con su división, PIUSI USA, Inc. para el continente de los Estados Unidos.

Los productos de DEF de PIUSI han sido puestos a prueba por el consumidor y mantienen su mejor interés en mente con un precio bajo.

EPA Tier 2 Emission standards are met with the installation of a catalytic device on trucks (SCR). This device requires a special fluid (a mixture of water and urea) called Diesel Exhaust Fluid (DEF). Each truck must be provided with a tank for this special fluid. Concerning with the problems of the handling of Diesel Exhaust Fluid (DEF), PIUSI has developed specific range of reliable products, manufactured with materials that are suitable with this fluid.



La nueva norma EPA Tier 2 sobre la reducción de las emisiones de contaminantes de los camiones en la atmósfera es respetada mediante la instalación de un catalizador a bordo del camión (SCR), que requiere la utilización de un líquido especial (una mezcla de agua y urea) denominado Diesel Exhaust Fluid (DEF). Cada camión estará dotado de un depósito adicional para contener este líquido. PIUSI, a partir de un atento análisis de los problemas relacionados con el trasiego de este líquido, ha desarrollado una gama de productos fiables, con materiales compatibles para este empleo.

# SUZZARABLU

This dispensing equipment is designed for easy management and dispensing.

Este equipo de suministro se diseñó para el manejo y suministro eficaz.

It includes a self-priming membrane pump that has no need for a dynamic seal which reduces the need for maintenance.

Incluye una bomba membrana sin estanquidad dinámica para reducir la necesidad de mantenimiento.

This kit provides an accurate meter that displays the quantity dispensed and an automatic nozzle.

Este kit provee además un medidor preciso para controlar la cantidad suministrada y una pistola automática para simplificar las operaciones de transferencia de combustibles.

## SUZZARABLU PRO

Code **F00201A1C**

- |  |   |
|--|---|
| - Stainless steel base with nozzle holder. | - Placa de soporte de acero inoxidable con porta pistola. |
| - Heavy duty pump.                         | - Electrobomba de trabajo pesado.                         |
| - K24 Meter.                               | - Medidor K24.  |
| - Automatic stainless steel nozzle.        | - Pistola automática de acero inoxidable.                 |
| - 20 ft delivery hose                      | - Manguera de suministro de 20 pies.                      |
| - 4 ft suction hose.                       | - Manguera de succión de 4 pies.                          |
| - Hose tail and clamps.                    | - Racor y abrazaderas.                                    |

## SUZZARABLU BASIC

Code **F00201A2C**

- |  |   |
|--|---|
| - Stainless steel base with nozzle holder. | - Placa de soporte de acero inoxidable con porta pistola. |
| - Heavy duty pump.                         | - Electrobomba de trabajo pesado.                         |
| - Manual nozzle.                           | - Pistola manual.   |
| - 20 ft delivery hose.                     | - Manguera de suministro de 20 pies.                      |
| - 4 ft suction hose.                       | - Manguera de succión 4 pies.                             |
| - Hose tail and clamps.                    | - Racor y abrazaderas.                                    |

1

## KIT BOTTOM CONNECTION

Code: F1515020





# SUZZARA BLUE PRO

FLOWRATE  
**7-9**  
gpm



# SUZZARA BLUE BASIC

FLOWRATE  
**7-9**  
gpm

Code	Description	Flow Rate		AC		Meter	Nozzle	Delivery Hose	On-Off Switch	Weight	Packing
		gpm	volt/Hz	rpm	watt						
F00201A1C	SUZZARABLU PRO	7-9	120/60	1700	400	Yes	Automatic	20	Yes	34	14.2 x 12 x 11.8
F00201A2C	SUZZARABLU BASIC	7-9	120/60	1700	400	No	Manual	20	Yes	33	14.2 x 12 x 11.8
F00201A80	SUZZARABLU 12V PRO	7-9	12	2800	260	Yes	Automatic	20	Yes	29	14.2 x 12 x 11.8
F00201A90	SUZZARABLU 12V BASIC	7-9	12	2800	260	No	Manual	20	Yes	28	14.2 x 12 x 11.8

2

## EPV CLOSED SYSTEM

**EPV Stainless Steel Dispense Coupler**  
by Micro Matic  
Code **F16477000**

**EPV Container Valve**  
(2.5"x5 buttress)  
3A orange key  
Code **F16989000**

**Down Tube HDPE 3/4" Diameter**  
1- for 55 gal DRUM EPV - F16992000 (805mm)  
2- for 275 gal IBC EPV - F16991000 (1065mm)  
3-for 330 gal IBC EPV - F16990000 (1245mm)



3

## MICRO MATIC

**RSV Stainless Steel Dispense Coupler**  
by Micro Matic  
Code **F1536000B**

**RSV Container Valve**  
Code **F17137000**

**RSV Down Tube**  
for 330 gal - F18229000 (1245mm)



# DRUM SYSTEM

This dispensing equipment offers a base that can be easily transferred.

*Este equipo de suministro dispone de una base fácilmente aplicable y desmontable.*

This kit contains a stainless steel base for drum, pump, manual nozzle, 20 ft. of delivery hose and 1.5 ft. of suction hose.

*Kit incluye: placa de soporte de acero inoxidable para barril, electrobomba, pistola manual, manguera de suministro 20 pies, manguera de succión 1,5 pies.*

## SUZZARABLU DRUM

FLOWRATE  
**7-9**  
gpm

Available with automatic nozzle




## SUZZARABLU TROLLEY

The drum trolley is designed for easy mobility of the drum and tote pump kit.

*Es disponible también el Trolley para el transporte eficaz del barril.*

With the Trolley you can install a Suzzara Blue Basic tote kit or you can choose the Suzzara Blue Pro tote kit (with the K24 meter and automatic nozzle).

*Además puede incorporar el grupo Suzzara Blue Basic o elegir el grupo Suzzara Blue Pro (con medidor K24 y pistola automática).*



Code	Description	Flow Rate	AC		Nozzle	Delivery Hose	On-Off Switch	Weight	Packaging	
			volt/hz	rpm						watt
<b>FO0201A3C</b>	SuzzaraBlue DRUM	8	120/60	1700	370	Manual	20	Yes	29	14.2 x 12 x 11.8
<b>FO0201A4C</b>	SuzzaraBlue DRUM automatic	8	120/60	1700	370	Automatic	20	Yes	33	14.2 x 12 x 11.8
<b>R12068010</b>	Trolley (only)								59	43 x 27 x 12.5

# HAND PUMP

DISPENSERS

This delivery system includes a hand pump, dispensing tube, down tube and adapter that is easy to install and remove from the drum.

*El grupo de suministro está constituido por una bomba de mano, tubo de distribución, tubo de succión y adaptador fácilmente aplicable y removible de un bidón. Las operaciones de transferencia de combustibles se efectúan por medio del correspondiente caño.*



Code	Description	Flow Rate	Spout	Dip Pipe	Inlet Pumps	2.5" x 5 buttress adaptor	Delivery Hose	Weight	Packing
		gpm	BSP		NPS		ft	lb	inch
<b>FO0332140</b>	Rotative hand pump with complete kit	4	3/4"	•	1"	•	9.8	8	18.9 x 14.6 x 10.4
<b>FO0332130</b>	Piston hand pump with complete kit	4	3/4"	•	1"	•	9.8	8	18.9 x 14.6 x 10.4

# NOZZLES

A complete range of automatic nozzles designed for the DEF market worldwide.

This new automatic nozzle is reliable, lighter, and ergonomic; setting the standard for all other nozzles.

Designed for industrial application, complying with the requirements of International Standard ISO/ FDIS 22241 - 4:2009 in relation to nozzles dispensing DEF.

## Technical data:

- Liquid compatible DEF (according to DIN 70070) and others\*.
- Liquid viscosity range from 1 to 6 cSt.
- Inlet 1" Male BSP.
- Spout outer diameter: 19 mm.
- Material in contact with the liquid, according to ISO 22241- 2:2006.

Available with locking device for filler neck magnet adaptor to avoid mis-filling.

\*Ask for other chemical liquid compatibility.

Una gama completa de pistolas automáticas diseñadas para el mercado mundial de DEF.

La nueva pistola automática es confiable, más liviana, fácil de manipular, ergonómica y crea un nuevo estándar para este sector.

Diseñada para aplicaciones industriales, cumple con los requisitos de la Norma Internacional ISO/ FDIS 22241-4:2009 en asunto de pistolas de transferencia de DEF.

## Datos técnicos:

- Compatible con DEF (en conformidad con DIN 70070) y otros\*.
- Intervalo de viscosidad de 1 a 6 cSt.
- Entrada 1" macho BSP (1" hembra BSP bajo pedido).
- Diámetro del caño de descarga: 19 mm.
- Material en contacto con el líquido conforme ISO 22241- 2:2006.

Disponible con boca de descarga con dispositivo de bloqueo del adaptador magnético para evitar la carga incorrecta del combustible.

\*pregunte por otros líquidos químicos compatibles.

FLOWRATE	ACCURACY
<b>9</b> gpm	<b>0.5</b> %



**SB 32 Automatic**



**SB 32 Metered**

Automatic nozzle with built-in meter



**SB 32 Mis-filling**

Automatic nozzle with magnetic adaptor



Code	Description	Magnetic Adaptor	Flow Rate gpm	Meter	Pressure		Inlet BSP	Spout ext. Ø	Weight lb	Packing inch
					psi	bar				
<b>F00618000</b>	Automatic nozzle SB 32	No	9	No	50.8	3.5	3/4"	19mm	1.4	18 x 8 x 3
<b>F00618010</b>	Automatic nozzle SB 32 Metered	No	9	Yes	50.8	3.5	3/4"	19mm	1.8	18 x 8 x 6
<b>F00618M20</b>	Automatic nozzle SB 32 Misf + Mag	Yes	9	No	50.8	3.5	3/4"	19mm	1.87	18 x 8 x 6
<b>F15165000</b>	Magnetic Adaptor								0.14	

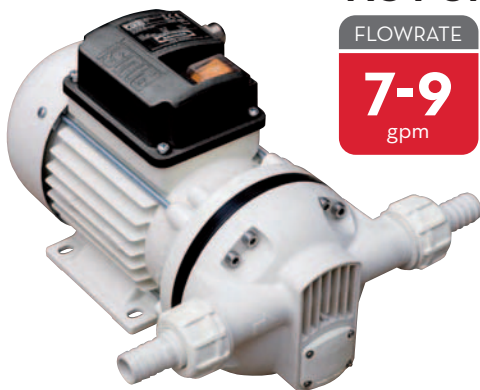
# SUZZARABLU PUMPS

PIUSI has developed a new type of membrane pump equipped with an electric motor, auto-shutoff timer and no need for a dynamic seal. This allowed us to obtain a reliable industrial pump with self-priming capabilities.

PIUSI ha desarrollado una nueva bomba de membrana equipada con un motor eléctrico, interruptor de parada automática con cronómetro electrónico sin estanquidad dinámica; esto permite una bomba industrial con una mayor fiabilidad y autocebante.

## AC PUMPS

FLOWRATE	PRESSURE	CYCLE
7-9 gpm	MAX 30 psi	30 min

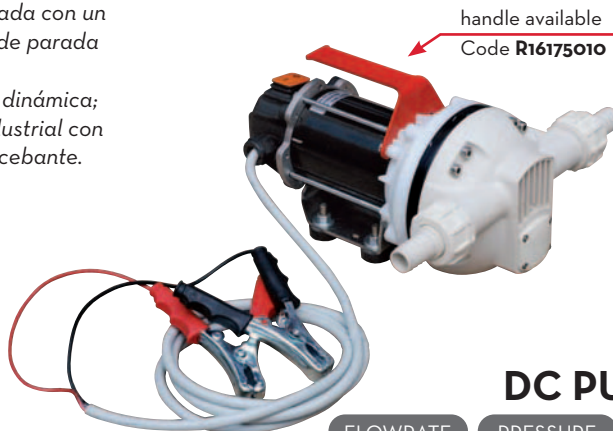


### Technical features:

- 120V/60Hz
- Absence of dynamic seals
- ON/OFF switch
- 6 ft. cable with socket

### Propiedad:

- 120V/60Hz
- Sin estanquidad dinámica
- ON/OFF interruptor
- Cable de 6 pies con enchufe



## DC PUMPS

FLOWRATE	PRESSURE	CYCLE
7-9 gpm	MAX 20 psi	20 min

### Technical features:

- Voltage 12V or 24 V
- Absence of dynamic seals
- ON/OFF switch
- 6 ft. cable with socket
- Handle available upon request

### Propiedad:

- 12 / 24 V voltaje
- Sin estanquidad dinámica
- ON/OFF interruptor
- Cable de 6 pies con enchufe

Code	Description	Flow Rate gpm	AC				Cables	Connections IN/OUT	On/Off Switch	Weight lb	Packaging inch
			volt/hz	rpm	watt	amp					
FO020300C	SuzzaraBlue AC pump 120V	7-9	120/60	1400	400	2	Yes	hose tail 3/4"	Yes	11.5	7.6 x 14 x 10.6
FO0204000	SuzzaraBlue DC pump 12V	7-9	12	2800	260	22	Yes	hose tail 3/4"	Yes	8	7.6 x 14 x 10.6
FO0204010	SuzzaraBlue DC pump 24V	7-9	24	2800	310	13	Yes	hose tail 3/4"	Yes	8	7.6 x 14 x 10.6

# HOSE REEL

Hose reel made specifically for DEF use with supply hoses.

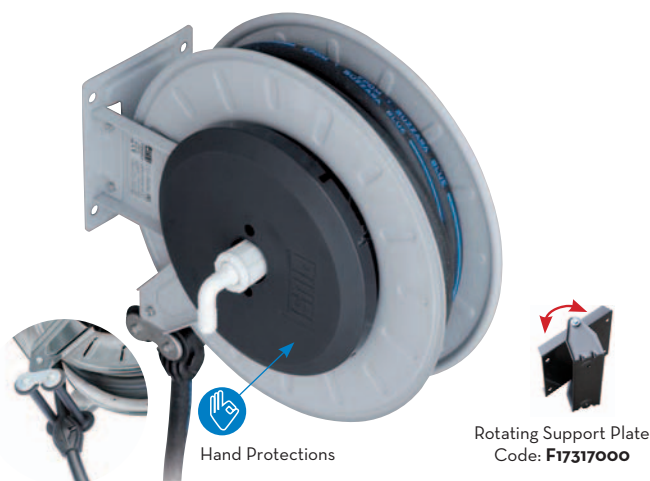
Designed to limit pressure loss and facilitate use, even for high flow rate, namely DEF refueling systems.

Features: reduces pressure loss through the proper sizing of the hydraulic system, includes a protective latch mechanism that prevents accidental contact with the hands; offers an adjustable arms for easy positioning as required; rotating wall support facilitates hose reel installation in different positions (optional).

Enrollador hecho específicamente para manguera de suministro de DEF.

Diseñado para eliminar las pérdidas de carga y facilitar el uso con bombas de alto caudal, típicas para instalaciones de abastecimiento de DEF.

Características: pérdidas de carga reducidas gracias al apresto correcto del sistema hidráulico; protectores laterales que evitan contactos accidentales con las manos; brazos regulables para facilitar la colocación según las necesidades; soporte giratorio (opcional) para la orientación del enrollador.



Code	Description	Hose		Max Operation psi	Inlet with Swivel	Outlet Hosetail	Pressure Loss	Weight lb	Packing inch
		ft	3/4"						
FO0750070	Hose reel DEF 26 ft EPDM hose	Yes	26	145	3/4"	1 psi @ 9 gpm	1 psi @ 9 gpm	38	21 x 10 x 20

# K24



Meter is easy to install, in line or at the end of the delivery hose. It contains a compact easy readable display. It can be connected directly on the nozzle. User can quickly substitute the 2 batteries. Display can be rotated in 4 different positions.

Impulse type signals:  
Single channel, reed switch.  
Electronic card with LCD display: 5 digit partial total from 0.1 to 99999, 6 digit total from 1 to 999999.

Resettable total available.  
Flow rate indication.

Este medidor es de fácil instalación, en línea o en el extremo de la manguera de suministro, y está dotado de un display compacto de fácil lectura. El medidor puede conectarse directamente en la pistola. Dos baterías fáciles de sustituir alimentan el medidor. La pantalla puede ser girada en cualquier posición.

Tipo de señal por impulso: monocanal, interruptor de láminas. Tarjeta electrónica con display LCD: Parcial de 5 cifras de 0,1 a 99999, Total de 6 cifras de 1 a 999999.

Total borrable disponible. Indicación del caudal.



FLOWRATE

**30**  
gpm

ACCURACY

**1**  
%

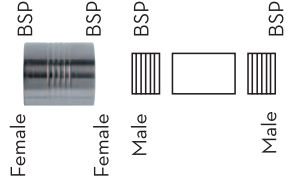
FLOWRATE

**30**  
gpm

ACCURACY

**1**  
%

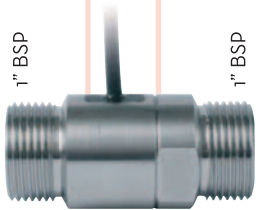
Socket 1" BSP/BSP



# TURBINOX

This meter is easy to install. A tight stainless steel body provides endurance for use in every condition. Also available a pulser display to connect an external receiver. User can quickly substitute the 2 display batteries.

Este medidor es de fácil instalación. Su robusto cuerpo de acero inoxidable lo hace resistente y apto para ser utilizado prácticamente en cualquier condición. Es disponible también un display emisor de impulsos para conexión a receptor externo. (El display es alimentado por dos baterías de fácil sustitución).



Inline pulse meter

FLOWRATE

**10**  
gpm

ACCURACY

**1**  
%

PULSE OUT

**333**  
p/g

## REMOTE DISPLAY with PULSE OUT



Code	Description	Flow Rate gpm	Pressure psi	Display	Pulse Out (p/g)		Weight lb	Packing Inch
					Pulser Version	Display Version		
FOO40734O	K24 Meter (1 socket) GAL	1.3 - 30	300	Yes		23	1.1	Blister
FOO40721B	K24 Pulser-meter (1 socket)	1.3 - 30	300	No	333		1.1	Blister
FOO42000A	Inline turbine pulse meter	1.6 - 10	420	No	333		1.6	9 x 4.7 x 6
FOO49503B	Remote display with Pulse OUT			Yes		1-100	2.2	9 x 4.7 x 6

# NOZZLE K24

The simple solution to directly monitor your DEF dispensing. The K24 meter is installed inline on the nozzle.

Una simple solución que permite vigilar directamente el suministro de DEF. El medidor K24 es instalado sobre la pistola.



FLOWRATE

**11**  
gpm

SPOUT EXT

**3/4"**

HOSE TAIL

**3/4"**  
with swivel

FLOWRATE

**20**  
gpm

SPOUT EXT

**3/4"**

HOSE TAIL

**3/4"**  
with swivel

## Automatic Nozzle with K24

## Manual Nozzle with K24



K24 Adapter for automatic nozzle  
M 3/4" BSP - F 1" BSP  
Code **F16475000**



Plastic Adapter for K24 manual nozzle  
Code **F15776000**

Code	Description	Flow Rate gpm	Pressure psi	Connections		Display	Weight lb	Packing Inch
				Inlet	Outlet			
<b>FOO870000</b>	Automatic nozzle with K24	2-18	50	3/4"	3/4"	Yes	6.6	16 x 11 x 4
<b>FOO870020</b>	Manual nozzle with K24	2-18	50	3/4"	3/4"	Yes	1.6	16 x 11 x 4

# FLUID MONITORING MC BOX

The MC Box can be connected to the pump and the meter of the delivery system, allowing the control and monitoring of the Diesel Exhaust Fluid (DEF) for private use. The MC system consists of a multi-user panel, and specific software and accessories to connect to a PC.

**Optional Items:**  
- PC installation software  
- i-button user keys.

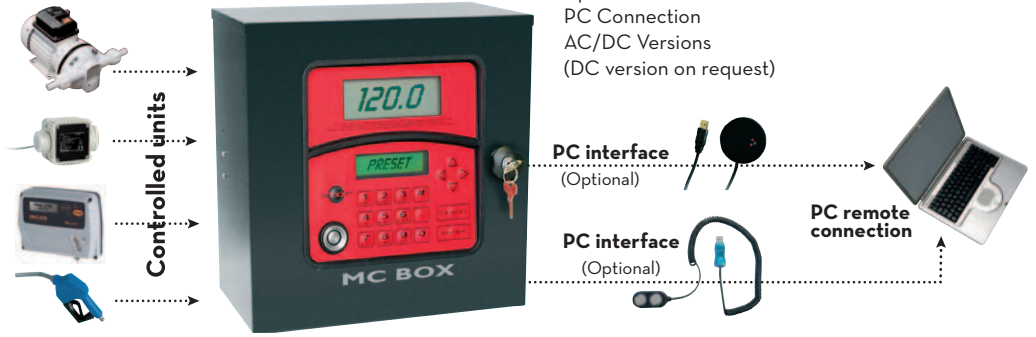
**Performance:** The capacity to manage up to 120 users with password or i-button user keys. Can calculate the consumption of single period per user, memorize the code of the truck and the distance of the progression and with the adequate software is able to manage up to 16 panels.

*El MC Box está conectado a la bomba del sistema de suministro el medidor permitiendo el control y monitoreo de líquido de DEF para uso privado. El sistema MC consiste de panel multi-usuario y software y accesorios para la conexión a PC.*

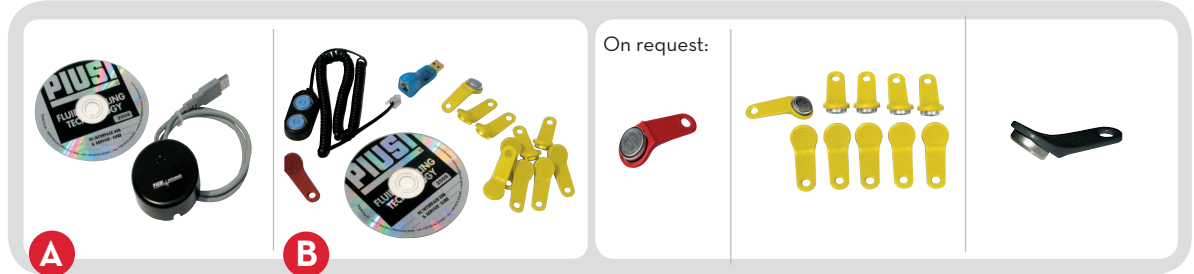
**Accesorios opcionales:**  
- Programa para PC.  
- Llaves i-button para usuarios.

**Rendimiento:** La capacidad de suministrar hasta 120 usuarios mediante contraseña o llave i-button.

*Puede calcular el consumo de cada usuario en un periodo determinado y memorizar el código del vehículo y el kilometraje. Con el software necesario puede administrar hasta 16 paneles con un programa.*



Code **F13980070**  
Up to 120 users  
PC Connection  
AC/DC Versions  
(DC version on request)



**PC interface**

Code **F1271000C**  
Includes:  
• 1 USB converter  
• 1 CD with PC software

**Key kit with USB plug**

Code **F14144040**  
Kit includes:  
• 1 red manager key  
• 10 yellow user keys  
• 1 key reader to transfer data to PC  
• CD with PC software

On request:



**Manager key**

Code **R12496000**  
Includes:  
• 1 red key

**User key**

Code **R15904000**  
Includes:  
• 10 yellow keys

Key for language translation Includes:  
• 1 black key  
English: **F15358000**  
Português: **F1400000A**  
Español: **F1396800A**  
Français: **F1390700A**

Code	Description	Users	AC/DC	Max Amp	Weight lb	Packaging inch	Operating Temp fahrenheit
F13980070	MC BOX	120	120v AC / 60hz	6.5	12	16 x 12 x 8	14 to +104
F1398001A	MC BOX 12V	120	12v DC	6.5	6.5	16 x 12 x 8	14 to +104

# FLUID MONITORING OCIO

Innovative system for monitoring the fluid level inside atmospheric tanks.

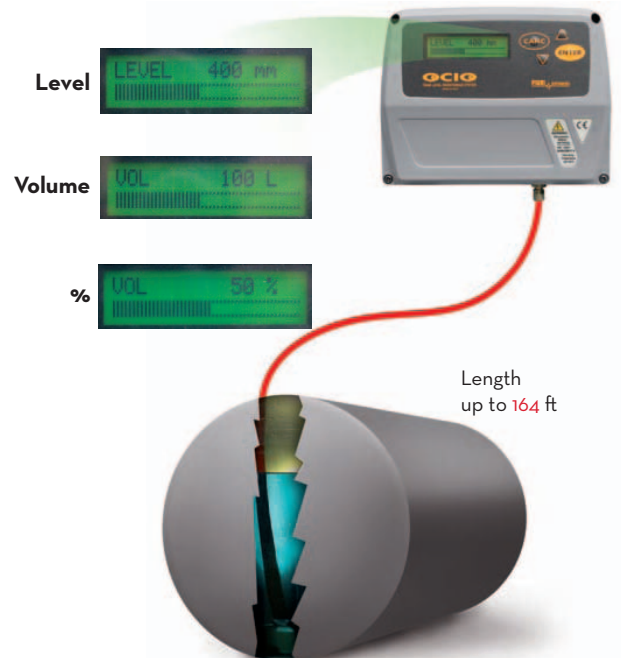
Sistema de control continuo de nivel en el depósito.

FLOWRATE **9** gpm

MEASURING height up to **12** feet



Code	Description	AC v/hz	Weight lb	Packaging inch
<b>F00755150</b>	SuzzaraBlue OCIO	120/60	4.8	11.8 x 16.1 x 3.9
<b>F00755S1A</b>	OCIO desk SINGLE TANK (software + PC interface for 1 tank)	-	0.9	8x5x5.5





# ACCESSORIES

## NOZZLES

Manual nozzles with strong resistant structure and a 3/4" hose tail.

*Pistola Manual. Está dotada de una estructura robusta y racor 3/4".*



Spout outer diameter 3/4"

Code **F14761000**

Automatic nozzles are provided with a device that stops the flow when the tank is full and with swivel and 3/4" hose tail.

*Pistola Automática. Dotada de dispositivo de parada automática del flujo cuando se llena el depósito y racor giratorio de 3/4".*



Spout outer diameter 3/4"

Code **F0061903B** Hose tail 3/4" with swivel

Code **F0061902B** Without swivel inlet thread 3/4" BSP

FLOWRATE

**20**

gpm

WEIGHT

**0.44**

lb

FLOWRATE

**10**

gpm

WEIGHT

**5.7**

lb

## GRAVITY KIT

Code **F15517010**

2" NPT



**Manual nozzle**  
+ 9 ft hose  
+ IBC bottom adapter

**Pistola manual**  
+ Tubo de 9 pies  
+ IBC Adaptador de fondo

## ADAPTERS



Code **F16074000**  
NPT/NPT  
(pack 20 pcs)



Code **F16458000**  
BSP/NPT  
(pack 20 pcs)



Code **F16073000**  
BSP/BSP  
(pack 20 pcs)

## UREA BOX

**Dimension:** 23 x 12 x 24 in  
**Weight:** 38 lb

Code **R1611800A**  
Key Included

SuzzaBlue Pro sold separately



## PLASTIC FITTINGS

**Hose tail**  
**Racor Ø 3/4"**



M 1" BSP x  
Ø 3/4"

Code  
**F15522000**



90° Ø 3/4"  
M 1" BSP

Code  
**F15485000**



90° Ø 3/4"  
F 1" BSP

Code  
**F15484000**

**Swivel**  
**Giratorio**



M/F 1" BSP

Code  
**F15179000**

**Socket 90°**  
**Hueco 90°**



1" F BSP

Code  
**F16433000**

**Linear Socket**  
**Hueco Linear**



1" F BSP

Code  
**F16434000**

**Hose tail**  
**Racor Ø 3/4"**



1" F BSP

Code  
**F16435000**

## FITTING

Stainless Steel  
Swivel Hose Tail  
3/4" BSP  
3/4" hose tail



Code  
**F14132000**

## SWIVEL

Rubber Protector  
Code  
**F16497000**



## SUCTION HOSE

3/4", coil 130 ft  
EPDM  
Code **F14124000**



## DELIVERY HOSE

3/4", coil 262 ft  
EPDM  
Code **F14125050**



## CLAMP

Stainless Steel  
23-35-12  
(10 pcs)  
Code **F13800000**



# PIUSI USA CONDITIONS OF SALES

## 1. Buyer's acceptance of general conditions of sale

These General Conditions of Sale shall apply to every Contract of PIUSI USA, Inc. ("Seller") for the sale of goods or articles ("Products") to any person who has purchased or agreed to purchase Products from Seller (the "Buyer"), unless Seller otherwise specifically agrees in writing. By placing any order for Products, the Buyer agrees to these General Conditions of Sale. Any other terms and conditions which may at any time be indicated by the Buyer, in the Buyer's order form or otherwise, shall be null and void and shall have no effect, even if not expressly objected to by Seller.

## 2. Acceptance

Any order of Buyer may be accepted by Seller in whole or in part. No order of the Buyer will be binding upon Seller unless accepted by Seller on Seller's form of Order Acknowledgment, signed by an officer or employee of Seller duly authorized to sign on behalf of Seller. Seller may not accept orders below a minimum amount of \$ 100.00

## 3. Prices

Unless otherwise agreed by Seller in writing, the Buyer will pay the prices of Seller for the Products in effect at the time of shipment. Packing is charged at cost price.

## 4. Time of Delivery

Any delivery dates specified by Seller will be deemed to be estimates only, unless specific commitments are made in writing by Seller. By placing an order, the Buyer agrees that the time of delivery of the Products is not of the essence, and waives any and all claims arising from any delay in delivery. Seller reserves the right to cancel in whole or in part, or to suspend or delay, in whole or in part, any orders due to (i) exigencies of Seller's production or delivery schedule, and (ii) any event in the nature of force majeure or beyond Seller's control.

## 5. Delivery of goods and risk of loss

Products ordered by the Buyer will be delivered to the Buyer ex Seller's warehouse or place of business. Unless otherwise specifically agreed by Seller in writing (i) risk of loss or damage to the Products shall pass to the Buyer upon delivery of the Products by Seller to a carrier, properly packaged for transportation according to Seller's ordinary packaging method, (ii) Seller shall not be required to procure insurance to cover the Products in shipment, (iii) any shipping arrangements made by Seller with carriers or forwarding agents at the Buyer's request shall be made solely on the Buyer's behalf and at the Buyer's sole cost and risk, and (iv) any agent appointed for such shipment shall be solely the Buyer's agent for all purposes.

## 6. Shipping of goods and related costs

The Buyer shall pay all costs and charges of any kind or description related to shipping the goods from Seller's warehouse or place of business to their eventual destination.

## 7. Terms of payment

Payment by the Buyer is due on the date shown in the Seller's invoice. In the event of any delay in payment, Seller shall have the right to suspend deliveries and may, at its option, terminate the Contract, as well as any other contracts with the Buyer, and hold the Buyer liable for damages. In the event Seller does not receive any payment by the due date, the Buyer shall pay to Seller interest on the unpaid amount, from each day from the due date to the date payment is actually received by Seller, at the maximum rate allowed by applicable law. Seller's right to such interest shall be in addition to, and not in lieu of, all other rights and remedies arising by reason of such non-payment. Any payment received by Seller may be applied to any outstanding balance owed by the Buyer or Seller, as Seller, in its sole discretion, may determine, any instructions of the Buyer to the contrary notwithstanding.

## 8. Limited warranty - Limitation of remedies

(See [www.piusiusa.com](http://www.piusiusa.com))

## 9. Claims

The Buyer shall make all payments in accordance with the terms of the Contract, notwithstanding any claim for any alleged fault, defect or irregularity in the Products. In the event of any delay in payment, Seller may, at its option, terminate the Contract and hold the Buyer liable for damages.

Any claim by the Buyer with respect to shortage, damages or discrepancy in shipments or noticeable defects of Products must be made in a writing dispatched to Seller, by certified or registered mail, return receipt requested, not later than 8 (eight) days from the date of delivery of the Products with respect to which the claim is made.

The Buyer may not accept only a part of the Products delivered. Acceptance of any part of the Products ordered shall constitute acceptance of all the ordered Products, whether or not the Products are all tendered in one shipment.

## 10. Termination of contract

Seller, without incurring any liability or obligation to the Buyer, shall have the right to terminate the Contract, in whole or in part, or to delay delivery, in whole or in part, at any time in the event Seller experiences difficulties in obtaining regular or sufficient supplies of finished goods, raw materials or auxiliary materials, or in case of other force majeure events or events outside Seller's control.

## 11. Applicable law and jurisdiction

The Contract shall be governed by and construed in accordance with the law of the State of Florida, without giving effect to conflict of law principles.

Any and all litigation or disputes arising out of or in connection with the Contract or the Products shall be conducted in the courts of the State of Florida, except that Seller, at its option, may commence and prosecute such litigation in any jurisdiction in which the Buyer may be located or found or may do or transact any business. The Buyer waives the right to trial by jury in any litigation, consents to the jurisdiction of the courts of the State of Florida, and agrees that any and all process may be served upon the Buyer outside of the State of Florida with the same force and effect as if such service had been made in the State of Florida.

## 12. Costs of collection

In the event Seller retains a collection agency to collect any amount owed by the Buyer, or institutes legal proceedings to collect such amount or to enforce any right under the Contract, Seller shall be entitled to recover from the Buyer reasonable collection and/or attorneys' fees, costs, and expenses paid or incurred by Seller.

## 13. Modifications

The Contract cannot be orally changed, modified or amended, in whole or in part. Any change, modification or amendment, to be effective, must be in writing, signed by an officer or employee of Seller duly authorized to sign on behalf of Seller.





For Questions or to place an order call  
USA DEF 855-782-2120



Certified  
ISO 9001 - ISO 14001